

*This is For You!!*

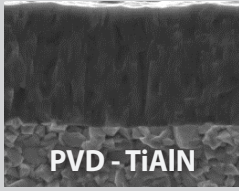
# YG801 GRADE

## PVD Coated Indexable insert

for Carbon Steel with Moderate Cutting Speed (Below 220m/min | 720 ft/min )  
Targeted for small component machining

**PROMOTION**





# YG801 P10 - P30

for Carbon Steel with Moderate Cutting Speed (Below 220 m/min | 720 ft/min)  
 Recommended for mild steel and boring application  
 Substrate and special PVD coating for excellent wear resistance

**Turning - PVD Grade** : Excellent Performance with Moderate Cutting Speed (120~220 m/min | 393~720 ft/min)  
 - For machining Low & Medium Carbon Steel under stable condition and medium & Low Interruption

Vc Range m/min (ft/min)	Soft Materials Carbon Steel	General Materials Alloy Steel, Cast Steel	Hard Materials Hardened Steel
	YG-1 Steel Grade		
300 ~ (984~)	YG3020	YG3010	
250 ~ 300 (820 ~ 984)	YG3030	YG3020	
220 ~ 250 (720 ~ 820)	YG3030		
~ 220 (~ 720)	YG801		YG3030

## Target application

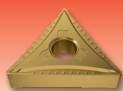
Industry	Component
Hydraulic (Cylinder, pipes, Pump)	
Pneumatic	
Automotive Engine valve, Ball Joint, Transmission	
General Small component (Cylinder, Shaft)	

- Where low cutting speed is a limitation due to component diameter, YG801 is a good option.
- Diameter of smaller components limits the maximum cutting speed.
- Boring application where cutting speed is relatively slower compared to external turning can be a good target.
- Also, small part manufacturing industry would be focused.

## Success Story

**↑ 112%**  
Tool Life

**40 pcs**  
YG801  
UF

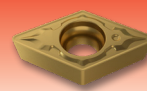


**18 pcs**  
Competitor A  
P10 Grade

Work piece	EN18 Round bar(Low carbon steel)
Vc	220 m/min (720 ft/min)
Feed	0.25 mm/rev (.01 in/rev)
D.O.C	1 mm (.039 in)
Insert	TNMG160404-UF YG801

**↑ 102%**  
Tool Life

**405 pcs**  
YG801  
UG



**200 pcs**  
Competitor B  
P10 Grade

Work piece	Small Dimension Round Bar
Vc	170 m/min (557 ft/min)
Feed	0.1 mm/rev (.004 in/rev)
D.O.C	3.5 mm (.138 in)
Insert	DCMT11T308-UG YG801

